



The power behind competitiveness

# Delta RPI-Home Series

Grid PV Inverter

RPI H3A / H4A / H5A



## Product Features

- Transformerless design
- Dual MPP Trackers
- Fanless design enhancing product life
- Wide voltage range
- Peak efficiency 97.5%
- Optional wifi / ethernet
- LCD display
- Aluminum die-cast enclosure
- IP65 protection level
- Easy installation
- Wall mountable



# Delta RPI Home Series

## Grid PV Inverter RPI H3A / H4A / H5A

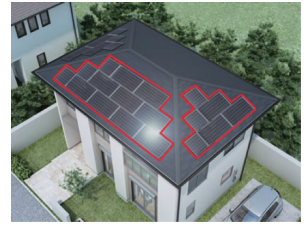
### High Quality Protection Design

RPI-Home series is designed with IP65 protection level and fast connector features to enhance the performance under outdoor environment.



### High Efficiency Performance

Dual MPP Trackers give more flexibility to PV system with multiple strings facing different angels & perform maximum yields with highest efficiency up to 97.5%.



### Delta RPI-Home Series Product Specs

Model		RPI H3A	RPI H4A	RPI H5A
DC Input	Max. input voltage	600V	600V	600V
	Operating voltage range	100~550V	100~550V	100~550V
	MPP range with Max. power			
	Symmetrical load	160~500V	180~500V	220~500V
	Asymmetrical load	320~500V	266~500V	291~500V
	Start voltage	100V	100V	100V
	Rated voltage	350V	350V	350V
	Max. input current	Each MPPT:10A Total 20A	Each MPPT:12A Total 24A	Each MPPT:12A Total 24A
	MPP tracker	2	2	2
	Max.ratio for asymmetrical load	100/0%;0/100%	80/20%;20/80%	70/30%;30/70%
	Maximum power for each MPP tracker*	3200W	3200W	3500W
	Connection type	2 pairs MC4	2 pairs MC4	2 pairs MC4
	AC Output	Max. output power	3000VA	4000VA
Max. output current		13.9A	18.2A	23.2A
Rated voltage		230V	230V	230V
Operating voltage range		-20% / +22%	-20% / +22%	-20% / +22%
Operating frequency range		50/60Hz ±5Hz	50/60Hz ±5Hz	50/60Hz ±5Hz
Power factor (adjustable)		0.8 ind ~ 0.8 cap	0.8 ind ~ 0.8 cap	0.8 ind ~ 0.8 cap
THD		<3%	<3%	<3%
Night time consumption**		<1W	<1W	<1W
Efficiency		Peak efficiency	97.50%	97.50%
	Euro efficiency	96.80%	97.00%	96.80%
Information	DC Switch	YES	YES	YES
	Communication port	RS485 / wifi optional	RS485 / wifi optional	RS485 / wifi optional
	Display	LCD 16 characters x 2	LCD 16 characters x 2	LCD 16 characters x 2
Certification		VDE-AR-N 4105	VDE-AR-N 4105	VDE-AR-N 4105
		G83-2	G83-2	G59
		AS4777 & 3100	AS4777 & 3100	AS4777 & 3100
		IEC 62109-1/-2	IEC 62109-1/-2	IEC 62109-1/-2
		EN 61000-6-2 EN 61000-6-3	EN 61000-6-2 EN 61000-6-3	EN 61000-6-2 EN 61000-6-3
General Data	Operating temp. range	-25~60°C	-25~60°C	-25~60°C
	Protection level	IP65	IP65	IP65
	Operating elevation	<2000m	<2000m	<2000m
	Cooling	Natural cooling	Natural cooling	Natural cooling
	Dimension (WxHxD,mm)	475 × 415 × 155	475 × 415 × 155	475 × 415 × 155
	Weight	21kg	21kg	21kg

\* At MPP input voltage with maximum power for asymmetrical load  
 \*\* Night time consumption includes backlight & communication  
 - All specifications are subject to change without prior notice.